

Thank you for downloading this file, I hope it will be useful to you!

Do you want other sheet music? Here are my transcriptions for clarinet,
published by Klarthe:

[Bach concerto in D for 2 violins, arranged for clarinet quartet](#)

[Schubert Trio D471, arranged for clarinet trio](#)

[Haydn London trio #1, arranged for clarinet trio](#)

[Stamitz trio in G, arranged for clarinet trio](#)

And for more scales, exercises and pieces for clarinet,
please visit my website,
I regularly upload new sheet music!

<http://www.guillaume-jouis.com>

C Major

Diatonic scale

Musical notation for the diatonic scale of C Major. The first staff shows the ascending scale in treble clef, C4 to C5. The second staff shows the descending scale in treble clef, C5 to C4, with a fermata over the final C4. The key signature is one sharp (F#) and the time signature is common time (C).

Seconds

Musical notation for the seconds of the C Major scale. The first staff shows the ascending scale in treble clef, C4 to C5, in eighth notes. The second staff shows the descending scale in treble clef, C5 to C4, in eighth notes. The key signature is one sharp (F#) and the time signature is 6/8.

Thirds

Musical notation for the thirds of the C Major scale. The first staff shows the ascending scale in treble clef, C4 to C5, in eighth notes. The second staff shows the descending scale in treble clef, C5 to C4, in eighth notes. The key signature is one sharp (F#) and the time signature is common time (C).

Triad

Musical notation for the triad of the C Major scale. The first staff shows the ascending scale in treble clef, C4 to C5, in quarter notes. The second staff shows the descending scale in treble clef, C5 to C4, in quarter notes. The key signature is one sharp (F#) and the time signature is 3/4.

Dominant seventh chord

Musical notation for the dominant seventh chord of the C Major scale. The first staff shows the ascending scale in treble clef, C4 to C5, in quarter notes. The second staff shows the descending scale in treble clef, C5 to C4, in quarter notes. The key signature is one sharp (F#) and the time signature is common time (C).

A minor

Diatonic scale

Musical notation for the diatonic scale of A minor, showing the ascending and descending lines on a treble clef staff in common time. The ascending scale starts on A4 and ends on A5, with a sharp sign above the final A. The descending scale starts on A5 and ends on A4, with a sharp sign above the final A.

Seconds

Musical notation for the seconds exercise of A minor, showing the ascending and descending lines on a treble clef staff in 6/8 time. The ascending line consists of eighth notes, and the descending line consists of eighth notes. A sharp sign is placed above the final A in both lines.

Thirds

Musical notation for the thirds exercise of A minor, showing the ascending and descending lines on a treble clef staff in common time. The ascending line consists of eighth notes, and the descending line consists of eighth notes. A sharp sign is placed above the final A in both lines.

Triad

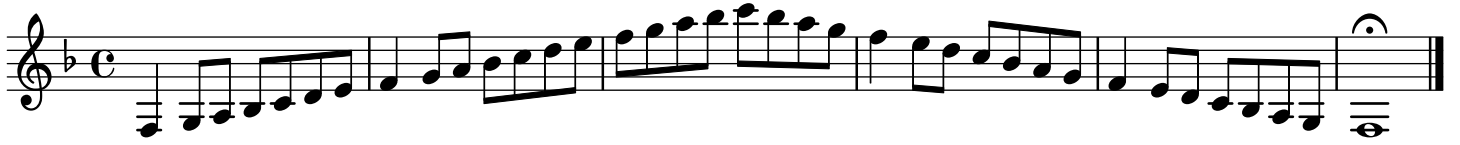
Musical notation for the triad exercise of A minor, showing the ascending and descending lines on a treble clef staff in 3/4 time. The ascending line consists of quarter notes, and the descending line consists of quarter notes. A sharp sign is placed above the final A in both lines.

Diminished seventh chord

Musical notation for the diminished seventh chord exercise of A minor, showing the ascending and descending lines on a treble clef staff in common time. The ascending line consists of quarter notes, and the descending line consists of quarter notes. A sharp sign is placed above the final A in both lines.

F Major

Diatonic scale



Seconds



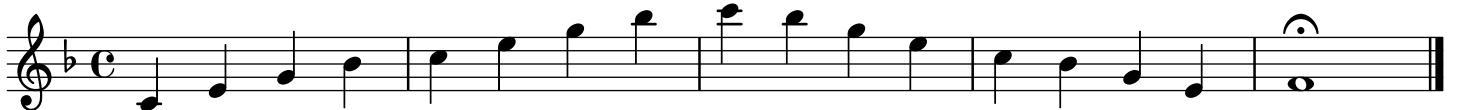
Thirds



Triad



Dominant seventh chord



B \flat Major

Diatonic scale



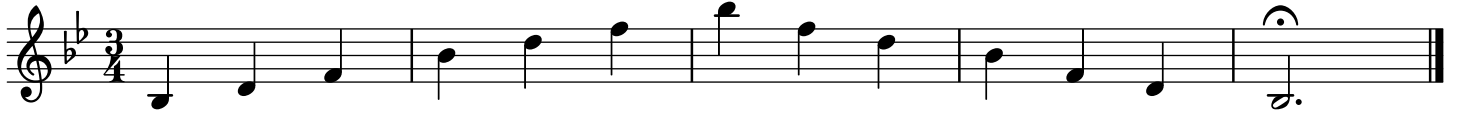
Seconds



Thirds



Triad



Dominant seventh chord



G minor

Diatonic scale



Seconds



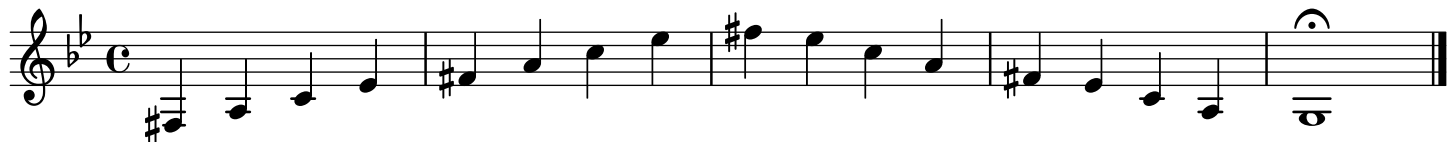
Thirds



Triad



Diminished seventh chord



E \flat Major

Diatonic scale



Seconds



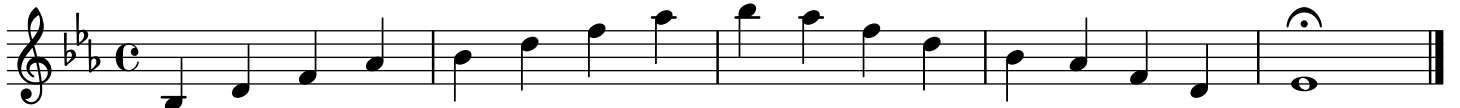
Thirds



Triad



Dominant seventh chord



C minor

Diatonic scale



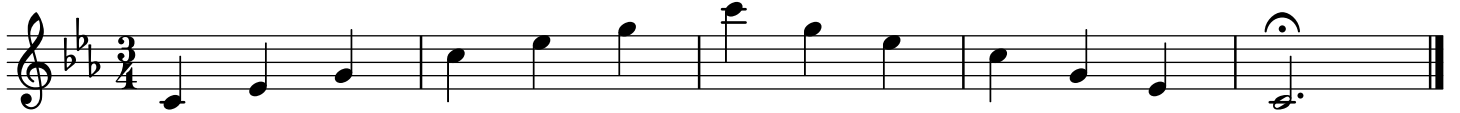
Seconds



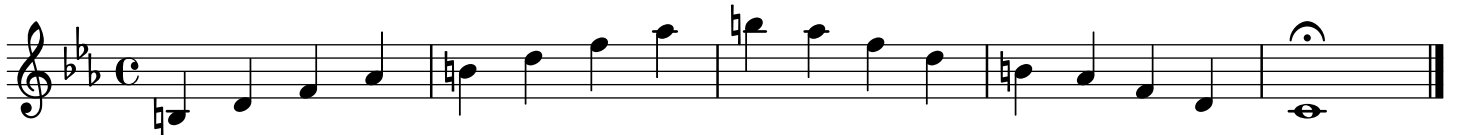
Thirds



Triad



Diminished seventh chord



G Major

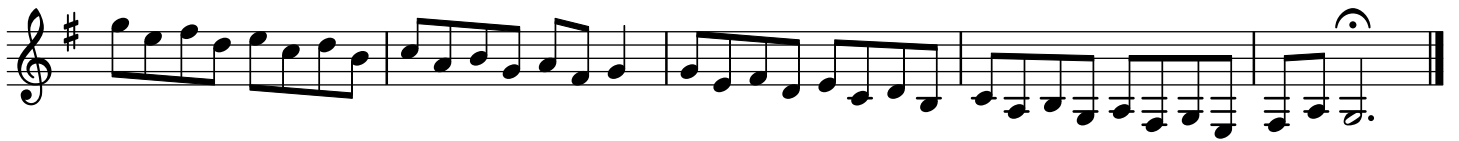
Diatonic scale



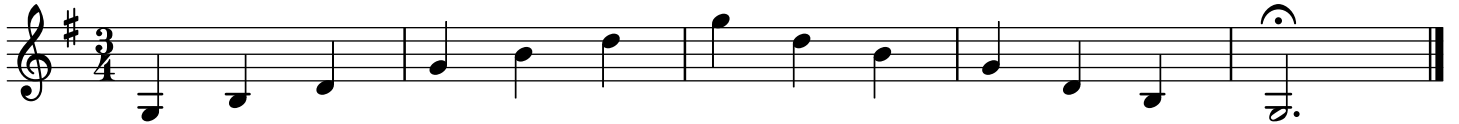
Seconds



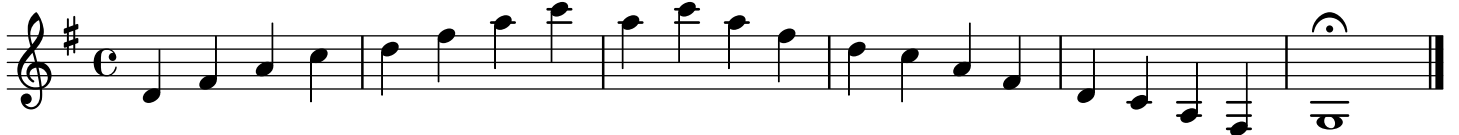
Thirds



Triad



Dominant seventh chord



D Major

Diatonic scale



Seconds



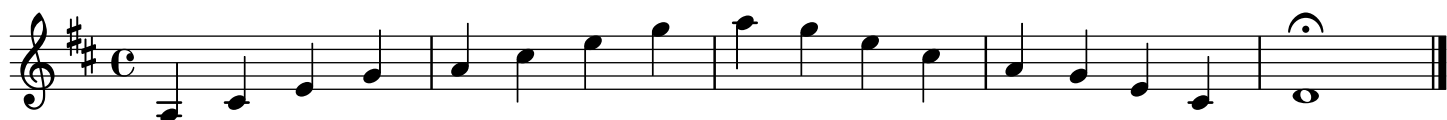
Thirds



Triad



Dominant seventh chord



B minor

Diatonic scale



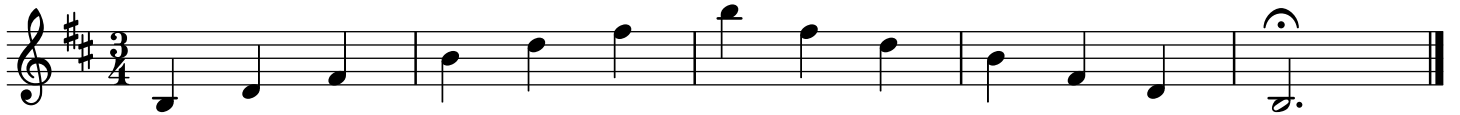
Seconds



Thirds



Triad



Diminished seventh chord



A Major

Diatonic scale



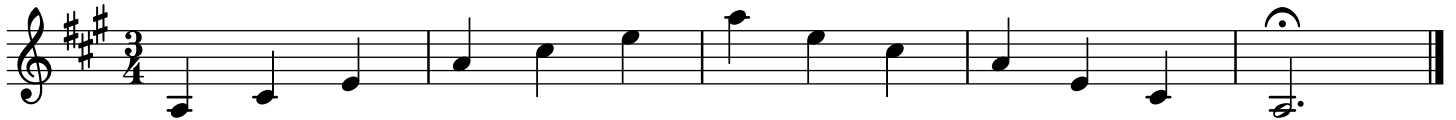
Seconds



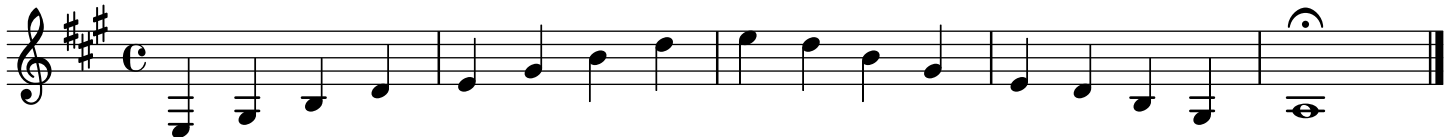
Thirds



Triad



Dominant seventh chord



F# minor

Diatonic scale



Seconds



Thirds



Triad



Diminished seventh chord

